

CAPACITIVE

Ø 6 mm - static
Ø 6 mm - statisch

adjustable

NEW



Ø 6 mm - static
Ø 6 mm - statisch

adjustable

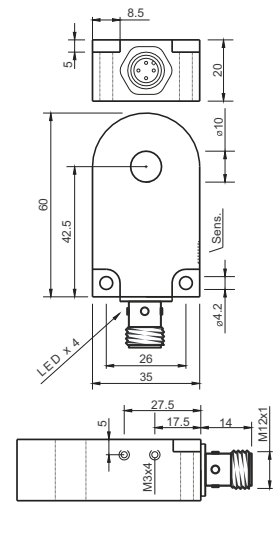
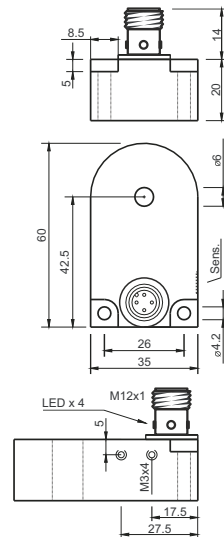
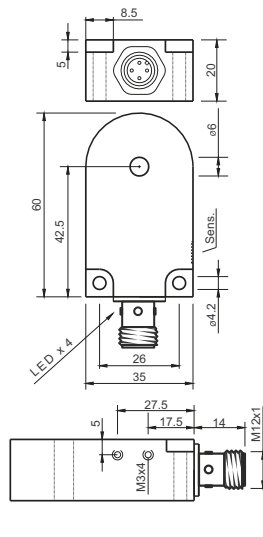
NEW



Ø 10 mm - static
Ø 10 mm - statisch

adjustable

NEW



Diameter	Durchmesser	Ø 6 mm		Ø 6 mm		Ø 10 mm	
Sensitivity	Empfindlichkeit	adjustable	einstellbar	adjustable	einstellbar	adjustable	einstellbar
Operating Voltage	Betriebsspannung	10...30 Vdc		10...30 Vdc		10...30 Vdc	
Current Load Capability	Ausgangsbelastbarkeit	200 mA		200 mA		200 mA	
Adjustment	Einstellung	2 V @ 200 mA		2 V @ 200 mA		2 V @ 200 mA	
Operating Temperature	Betriebstemperatur	-25... +70°C		-25... +70°C		-25... +70°C	
Protection Class	Schutzklasse	IP67		IP67		IP67	
Ring Material	Ring Material	Nylon, PA66		Nylon, PA66		Nylon, PA66	
Housing Material	Gehäuse	PBT		PBT		PBT	
Connected	Anschluss	Conn. M12	Stecker M12	Conn. M12	Stecker M12	Conn. M12	Stecker M12
Output Indicator	Schaltanzeige	built-in integriert		built-in integriert		built-in integriert	

Part Number | Artikelnummer

PNP, NO		CR06S-PO-A12	CR06S-PO-RA12	CR10S-PO-A12
PNP, NC		CR06S-PC-A12	CR06S-PC-RA12	CR10S-PC-A12
NPN, NO		CR06S-NO-A12	CR06S-NO-RA12	CR10S-NO-A12
NPN, NC		CR06S-NC-A12	CR06S-NC-RA12	CR10S-NC-A12



Ø 10 mm - static
Ø 10 mm - statisch

adjustable
NEW



Ø 15 mm - static
Ø 15 mm - statisch

adjustable
NEW



Ø 15 mm - static
Ø 15 mm - statisch

adjustable
NEW



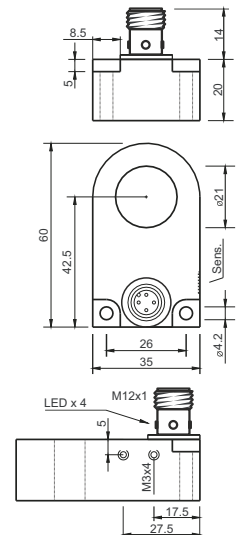
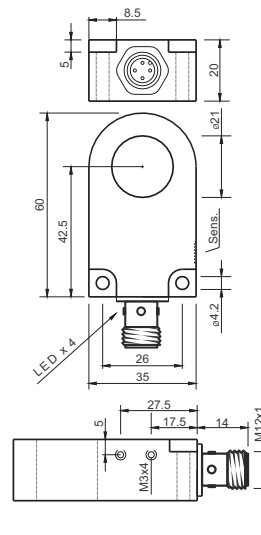
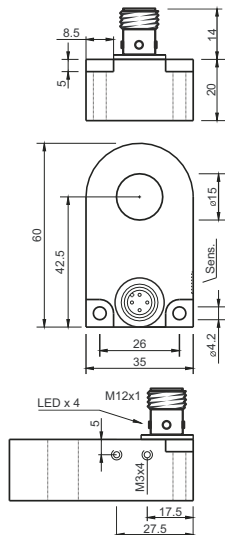
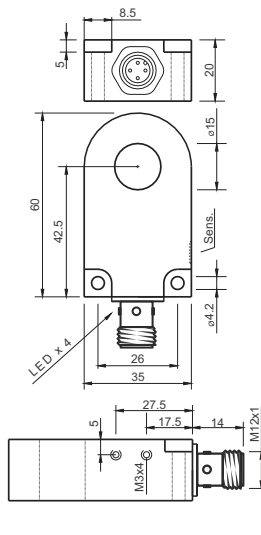
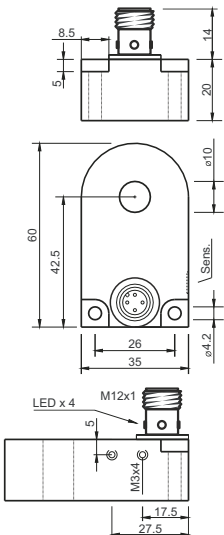
Ø 21 mm - static
Ø 21 mm - statisch

adjustable
NEW



Ø 21 mm - static
Ø 21 mm - statisch

adjustable
NEW



Ø 10 mm

adjustable einstellbar
10...30 VDC
200 mA
2 V @ 200 mA
-25... +70°C
IP67
Nylon, PA66
PBT
Conn. M12 Stecker M12
built-in integriert

Ø 15 mm

adjustable einstellbar
10...30 VDC
200 mA
2 V @ 200 mA
-25... +70°C
IP67
Nylon, PA66
PBT
Conn. M12 Stecker M12
built-in integriert

Ø 15 mm

adjustable einstellbar
10...30 VDC
200 mA
2 V @ 200 mA
-25... +70°C
IP67
Nylon, PA66
PBT
Conn. M12 Stecker M12
built-in integriert

Ø 21 mm

adjustable einstellbar
10...30 VDC
200 mA
2 V @ 200 mA
-25... +70°C
IP67
Nylon, PA66
PBT
Conn. M12 Stecker M12
built-in integriert

Ø 21 mm

adjustable einstellbar
10...30 VDC
200 mA
2 V @ 200 mA
-25... +70°C
IP67
Nylon, PA66
PBT
Conn. M12 Stecker M12
built-in integriert

CR10S-PO-RA12
CR10S-PC-RA12
CR10S-NO-RA12
CR10S-NC-RA12

CR15S-PO-A12
CR15S-PC-A12
CR15S-NO-A12
CR15S-NC-A12

CR15S-PO-RA12
CR15S-PC-RA12
CR15S-NO-RA12
CR15S-NC-RA12

CR21S-PO-A12
CR21S-PC-A12
CR21S-NO-A12
CR21S-NC-A12

CR21S-PO-RA12
CR21S-PC-RA12
CR21S-NO-RA12
CR21S-NC-RA12

