



Aranet PRO+ base station

The core of the Aranet ecosystem. Aranet PRO+ base is equipped with an industrial power supply PoE 802.3af. The base can be connected to the internet via Wi-Fi, Ethernet or an integrated cellular 4G modem.



aranet

Aranet PRO+ base station

3 in 1: gateway, data storage and web server
SensorHUB software included

Regions and versions

	ISM band ¹	Radio channels	with LTE modem	w/o LTE modem
Europe	EU868	Ch1: 868.1 MHz Ch2: 868.3 MHz Ch3: 868.5 MHz	TDSBOB03	TDSBOA03
Americas	US920	Ch1: 917.3 / 922.9 MHz Ch2: 917.5 / 923.1 MHz Ch3: 917.7 / 923.3 MHz Ch4: 917.9 / 923.5 MHz	TDSBOBU3	TDSBOAU3
Asia	AS923	Ch1: 923.1 MHz Ch2: 923.3 MHz	TDSBOBC3	TDSBOAC3

Specifications

Receiver sensitivity	-127 dBm
Ports	Ethernet
Communication	Ethernet cable, local Wi-Fi 2.4 GHz
Power	PoE 802.3af
Local data storage space	10 years of measurements of 100 sensors ²
Data protection methods	XXTEA, HTTPS, password protected user accounts
User interface languages	English, French, Spanish, Russian, Latvian

General

Ingress Protection	IP67
Operating temperature	-40 °C to +60 °C (-40 °F to 140 °F)
Dimensions	180 x 120 x 45 mm (7.09 x 4.72 x 1.77 in)
Weight	250 g (8.8 oz)
Enclosure material	PC plastic

Compliance

CE	Conformité Européenne
----	-----------------------

¹ Band of the radio spectrum reserved internationally for industrial, scientific and medical purposes.

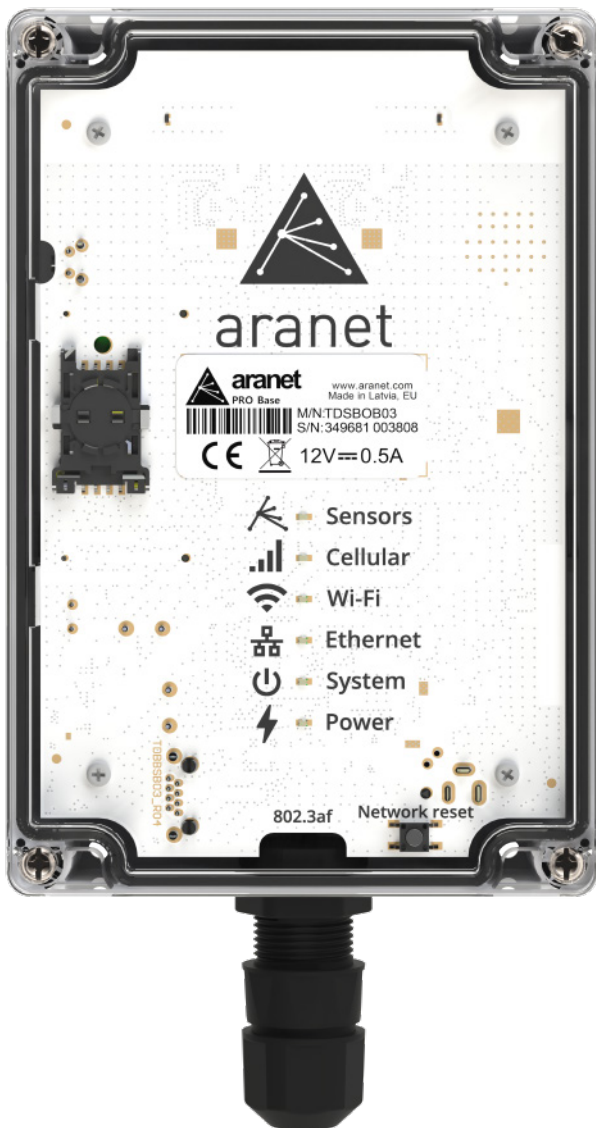
² Aranet4 sensor with 5 minute TX interval chosen for calculation.



Ihr Aranet Partner:

C+R Automations- GmbH
Nürnberger Straße 45
90513 Zirndorf

Tel. +49 (0)911 656587-0
info@crautomation.de
www.crautomation.de



Aranet PRO Plus LTE base station

The core of the Aranet ecosystem. Aranet PRO Plus LTE base is powered by PoE 802.3af. The base can be connected to the internet via Wi-Fi, Ethernet or an integrated cellular 4G modem.

Aranet PRO Plus LTE base station

3 in 1: gateway, data storage, and web server

SensorHUB software included

Regions and versions

	ISM band ¹	Radio channels	Part Number
Europe	EU868	Ch1: 868.1 MHz Ch2: 868.3 MHz Ch3: 868.5 MHz	TDSBOB03
Americas	US920	Ch1: 917.3 / 922.9 MHz Ch2: 917.5 / 923.1 MHz Ch3: 917.7 / 923.3 MHz Ch4: 917.9 / 923.5 MHz	TDSBOBU3
Asia	AS923	Ch1: 923.1 MHz Ch2: 923.3 MHz	TDSBOBC3

Specifications

Receiver sensitivity	-127 dBm
Ports	Ethernet
SIM card slot	Standard size, flip type
Communication	Ethernet cable, local Wi-Fi 2.4 GHz, 4G LTE
Power	PoE 802.3af
Local data storage space	10 years of measurements of 100 sensors ²
Data protection methods	XXTEA, HTTPS, password-protected user accounts
User interface languages	English, French, Spanish, Russian, Latvian

General

Ingress Protection	IP67
Operating temperature	-40 °C to +60 °C (-40 °F to 140 °F)
Dimensions	180 x 120 x 45 mm (7.09 x 4.72 x 1.77 in)
Weight	250 g (8.8 oz)
Enclosure material	PC plastic

Compliance

CE	Conformité Européenne
----	-----------------------

¹ Band of the radio spectrum reserved internationally for industrial, scientific and medical purposes.

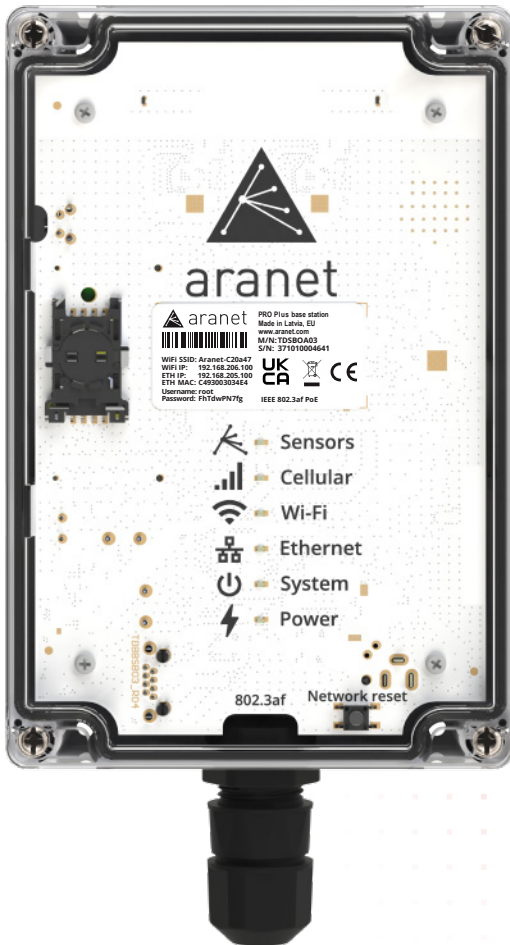
² Aranet4 sensor with 5 minute TX interval chosen for calculation.



Ihr Aranet Partner:

C+R Automations- GmbH
Nürnberger Straße 45
90513 Zirndorf

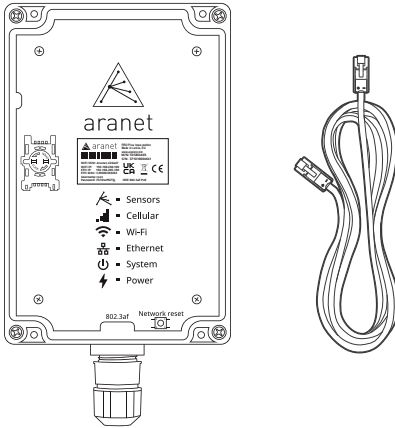
Tel. +49 (0)911 656587-0
info@crautomation.de
www.crautomation.de



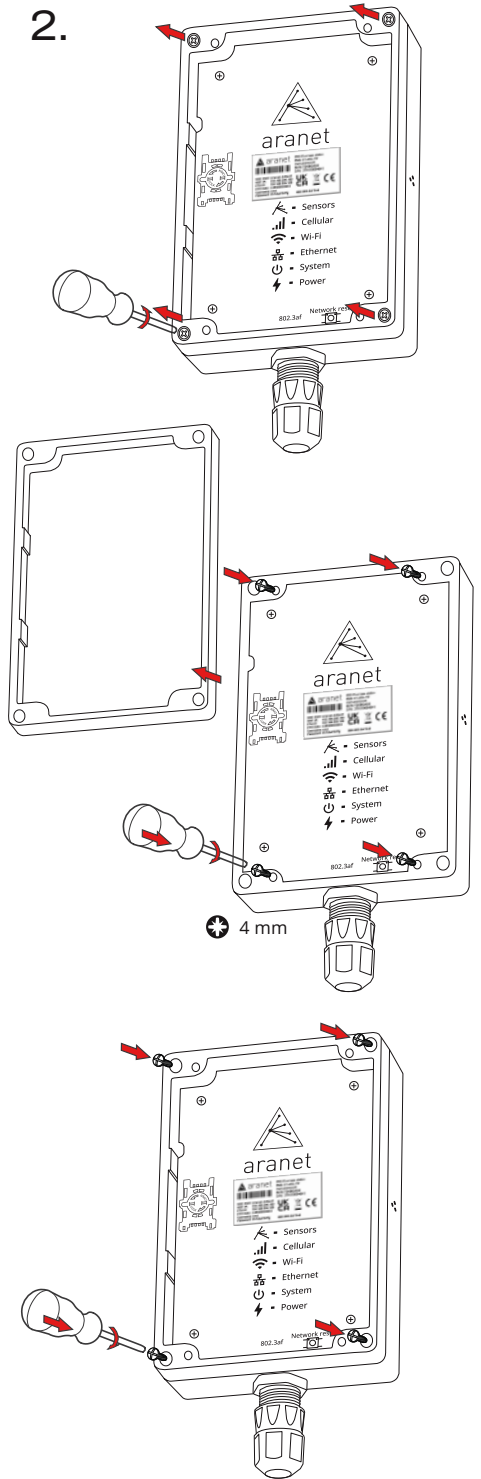
Aranet PRO Plus/ PRO Plus LTE base station

Quick start guide

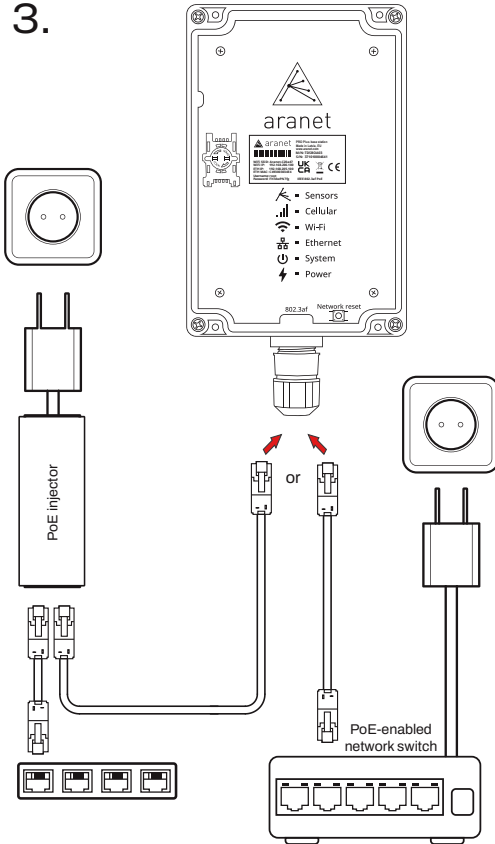
1.



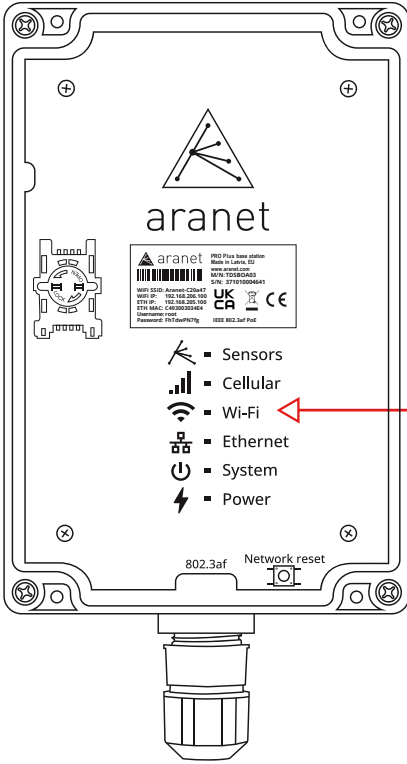
2.



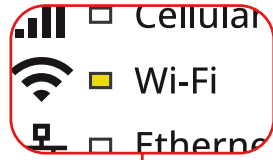
3.



4.



⌚ 30 sec



5.

① WiFi SSID: Aranet-*****

② URL: <http://192.168.206.100>

③

Username: root

Password: *****

Remember me LOGIN

aranet PRO Plus base station
Made in Latvia, EU
www.aranet.com
M/N: TDSBOA03
S/N: 371010004641

WiFi SSID: Aranet-C20a47
WiFi IP: 192.168.206.100
ETH IP: 192.168.205.100
ETH MAC: C493003034E4
Username: root
Password: FhTdwPN7fg

UK CA CE
IEEE 802.3af PoE

Smarter
than others



©2017 - 2022 SAF TEHNIKA JSC
ALL RIGHTS RESERVED.
VER.1.0



IEEE 802.3af PoE injector

for Aranet PRO Plus/PRO Plus LTE base station. It ensures both data connection and electrical power to the device.

IEEE 802.3af PoE injector for Aranet PRO Plus/PRO Plus LTE base station

Indication

Blinking GREEN	Unit is "ON" Active with No Load
Blinking YELLOW/Solid GREEN	Unit has detected an Invalid Load
Blinking Green/Solid YELLOW	Unit is in Over-Load Condition
Solid GREEN	Unit has detected a Valid IEEE802.3af Load

Specifications

Voltage - Input	90 ~ 264 VAC
AC Input Frequency	47 – 63 Hz
Number of Ports	1
Voltage - Output	56V
Current - Output	275 mA
Power	15.4W
Compliance	IEEE802.3af

General

Ingress Protection	IP20
Operating temperature	-20 °C to +50 °C (-4 °F to 122 °F)
Dimensions	106 x 40 x 27 mm (4.17 x 1.57 x 1.1 in)
Weight	100 g (3.5 oz)

Compliance

CE	Conformité Européenne
cUL/UL	Underwriters Laboratories
IEC/EN	International Electrotechnical Commission/European Harmonized

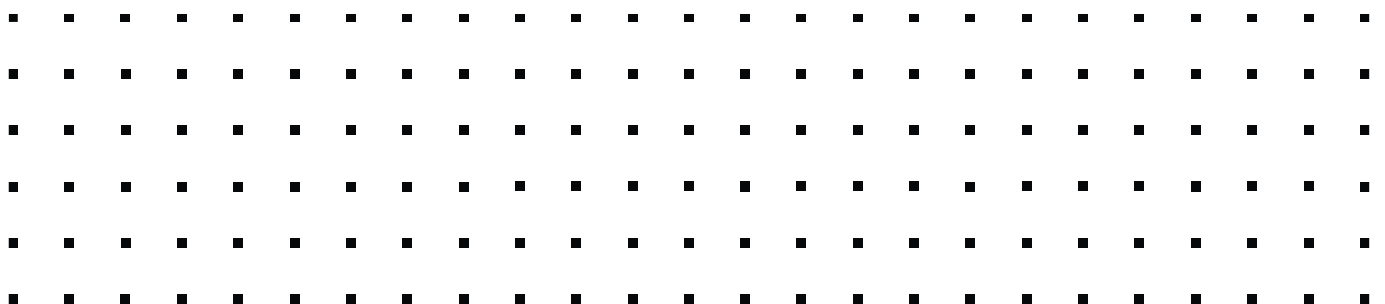


PoE injectors

for Aranet PRO Plus &
Plus LTE base stations

PoE or Power over Ethernet is a technology for passing electric power along with data. PoE injector ensures both data connection and electrical power to the device.

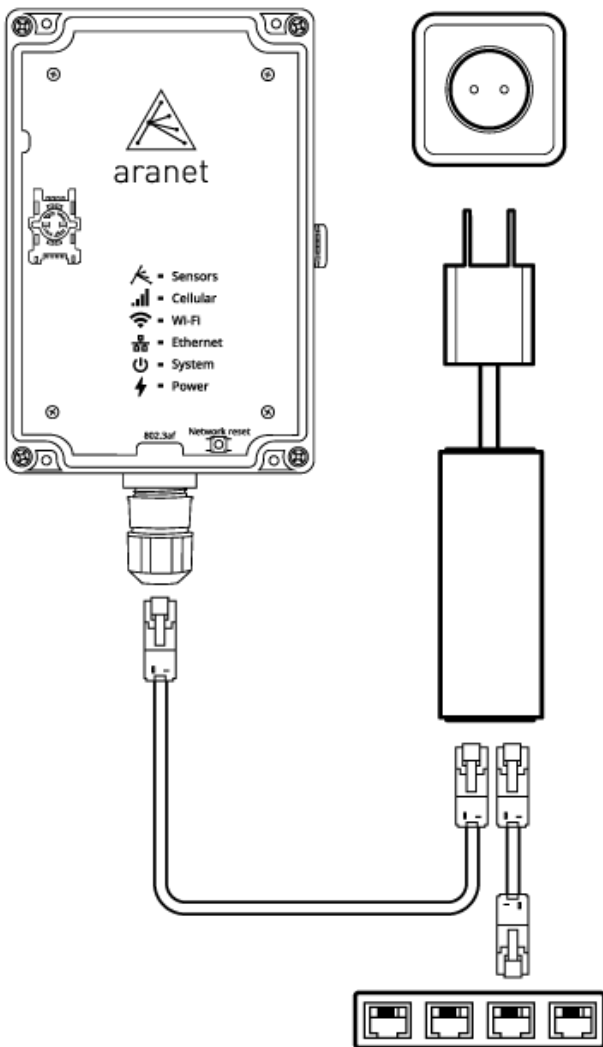
2022-11-15



Aranet PRO Plus and PRO Plus LTE base stations and PoE injector connection

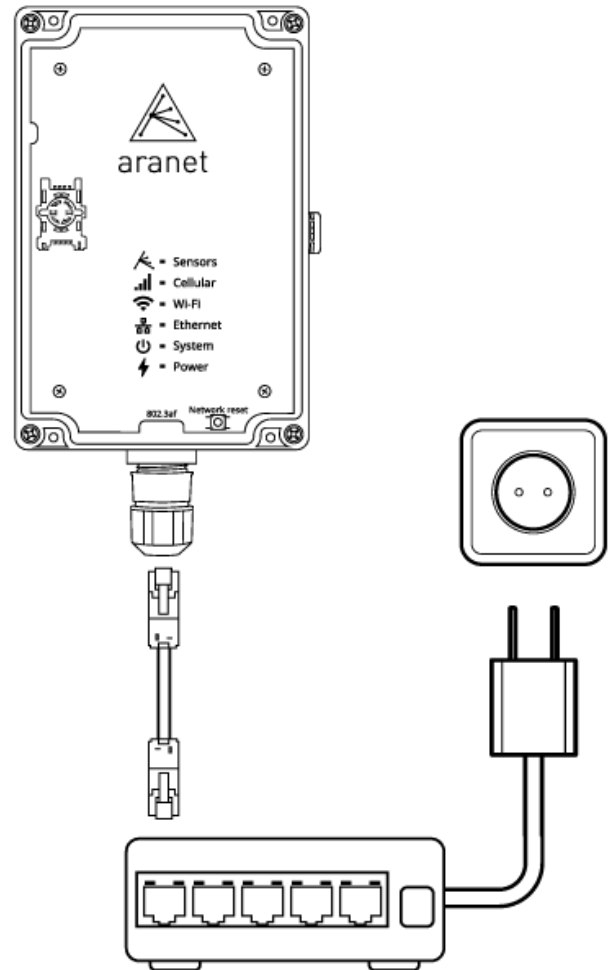
Aranet PRO Plus and **Aranet PRO Plus LTE** base stations are specifically designed for outdoor use. To ensure the IP67 protection class, these bases have only one secure connection socket meant for network cable. Thus, an active PoE injector is needed to ensure power and network connection simultaneously. Aranet PRO Plus and PRO Plus LTE base stations comply with standard **PoE 802.3af**.

switch. In this situation, the network switch incorporates both network switching and power supply capabilities for several devices simultaneously, including the base station.



Option 1: Aranet PRO Plus/PRO Plus LTE base station powered by PoE injector, which connects to the network and mains electricity

Additionally, the second option for network connection and power can be ensured by connecting the Aranet PRO Plus and Aranet PRO Plus LTE base to a PoE-enabled network



Option 2: Aranet PRO Plus/PRO Plus LTE base station connected to PoE-enabled network switch

Information for completing your order

- The PoE injectors should be purchased based on your necessity
- Please note that Aranet PRO Plus and PRO Plus LTE base stations are only compatible with active PoE injectors (PoE 802.3af standard)

Aranet PRO Plus	TDSBOA*3
Aranet PRO Plus LTE	TDSBOB*3
Active PoE injector (for Aranet PRO Plus/PRO Plus LTE)	TDAPOE03