

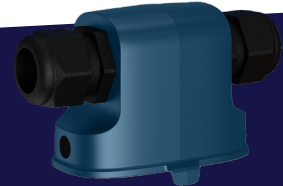


ENTERPRISE ANCHOR

The Pozyx Enterprise anchor captures the ultra-wideband (UWB) signals from the tags, preprocesses the data and sends it to the Pozyx Positioning Server.



**STANDARD
EDITION**



**INDUSTRIAL
EDITION**



— Features

- Omni-directional antenna
- Optimized for high radio range (LNA)
- Bluetooth ready
- Enables high accuracy RTLS (10-30cm)
- Support for both TWR and TDOA positioning
- Powered by Power-over-Ethernet (PoE+) or AC/DC adapter
- Fast ethernet connection to Positioning Server
- Supports daisy chaining of up to 4 anchors
- IP20 and IP66/67 casing options
- Firmware upgradeable
- SNMP support for diagnostics
- Shock detection
- Different mounting options



TAG



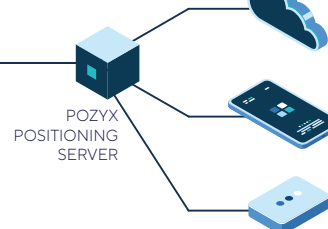
YOU ARE HERE



ANCHOR NETWORK

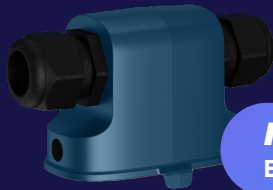
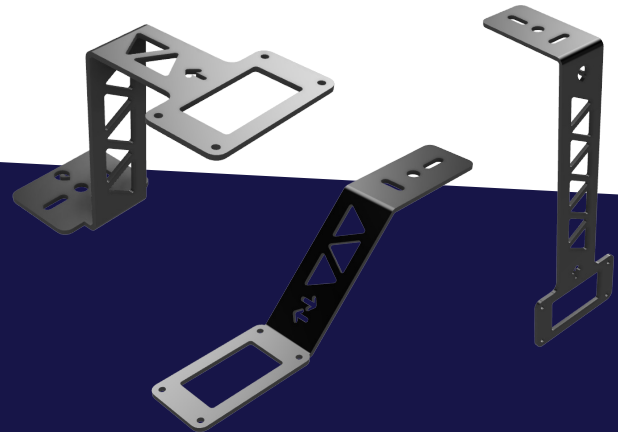


POE+ SWITCH



POZYX
POSITIONING
SERVER

POZYX PLATFORM

**STANDARD**
EDITION**INDUSTRIAL**
EDITION

Specifications

CONNECTIVITY	UWB (CH2*/CH3*/CH5), BLE, Fast Ethernet <i>(*) Country dependent and potentially subject to registration and authorization.</i>
CASING	ABS
OPERATIONAL TEMPERATURE	-25°C to 55°C
POWER	3.5W (typ)
POWER SUPPLY	DC: 6V - 54V PoE: 802.3af / PoE+: 802.3at
SENSORS	Accelerometer 3-Axis 2g 12 bits (100 Hz) Air pressure sensor: 260 to 1260 hPa (24 bit)
CERTIFICATIONS	CE, FCC, ISED, UKCA, SRRC (May 2022, pending)

Mounting options

- Wall bracket
- Corner bracket
- Ceiling bracket

STANDARD
EDITION**INDUSTRIAL**
EDITION

DIMENSIONS

158 × 98 × 53 mm (l × w × h)

229 × 98 × 59 mm (l × w × h)

WEIGHT

170g

270g

INGRESS PROTECTION

IP20

IP66/67

Contact



C+R Automations- GmbH

Nürnberg Straße 45
90513 ZirndorfTel. +49 (0)911 656587-0
Fax +49 (0)911 656587-99E-Mail: info@crautomation.de
www.crautomation.de

Änderungen vorbehalten