

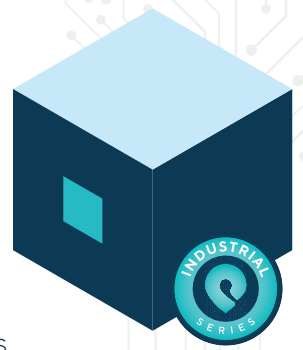
# pozyx®

## GATEWAY

The *Pozyx* Gateway is the beating heart of your real-time locating system.

**It processes all information from the Anchors and Tags** and gives you access to **real-time and historical data** to surface smart insights that improve your business.

*It also comes with a web app to let you easily set up, plan, and configure your system, as well as see powerful analytics right at your fingertips.*



## Discover Incredible Accuracy with the Pozyx Positioning Engine

**The Pozyx Positioning Engine translates the information from Anchors & Tags into super-accurate real-time positioning data.**

The engine supports different protocols seamlessly: both TWR (Two Way Ranging) and TDoA (Time Difference of Arrival) are available for maximum flexibility. The Pozyx Positioning Engine also uses proprietary algorithms to make real-time positioning data even more reliable. What's more, Pozyx harnesses cutting-edge, patent-pending technology to take accuracy to the next level.

## Properties

### MECHANICAL

Dimensions	210 mm (w) x 125 mm (d) x 77 mm (h)
Weight	1,9 kg
Mounting	VESA Mount

### POWER

DC Input	+9~36V
AC Input	External adapter 100 / 240V ; AC-DC 84W

### ENVIRONMENT

Storage Temp.	-20°C to +70°C
---------------	----------------

POWER	CE / FCC class A
-------	------------------

## Specifications

Positions	1000 updates per second
CPU	i5
Memory	1x DDR4 SODIMM socket, Max. 4GB
Storage	SSD
I/O Ports	1x Uplink Port 4x Anchor Network Ports 2x USB 3.0 1x HDMI
Optional Modules & Accessory	3G Antenna



POZYX  
TAG



ANCHOR  
NETWORK



PoE  
SWITCH

YOU ARE HERE



POZYX  
GATEWAY



POZYX  
CLOUD



CUSTOMER  
APPLICATION



MQTT

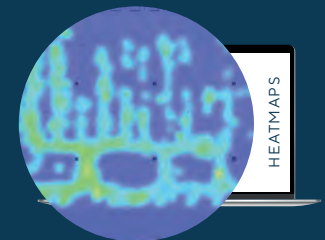
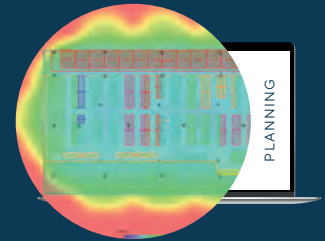


ONLINE DOCUMENTATION  
[docs.pozyx.io/enterprise](https://docs.pozyx.io/enterprise)

## Web App

Get started with your real-time location system in 1-2-3 thanks to the Gateway's user-friendly built-in web app.

- **Plan your Anchors** with ease and predict performance
- **Make deployment easy** and save time with user-friendly tools
- **Easily validate your setup** after installation is complete
- **Perform maintenance tasks** right from the web app
- **Get access to all information in real-time** with our MQTT & HTTP API
- **Map your floorplan** with our visualization tools to get a crystal-clear view of your business
- **Create zones** with a few clicks
- **See Anchor information** and get a network topology
- **Configuring your system** is easy with clear settings
- **Get a bird's eye view of every tag**, anchor and gateway right in the app
- **Make user management easy** with roles: owners, managers, or guests



## Analytics App

The Pozyx Analytics app gives you deep insights into your real-time system so you can make data-driven decisions to take your business to the next level. With user-friendly ways to look at your data, the analytics app opens up new perspectives. A software license is required to activate analytics.

- **Heatmaps** let you see where things and people go to spot bottlenecks, **see congestion, track better routing, and more**
- With **spaghetti charts**, you can track and trace people or assets in **real-time and historically**
- **Zone analytics** let you define discreet zones to track **how things move** throughout your production process or warehouse
- Use **time budgets** to easily register working hours or calculate **time spent per different zone** or step of a production process
- The **Analytics HTTP API** makes it easy and simple to **integrate smart data** into your own systems or **interface with third-party systems or platforms**

## Contact

Designed & Made in **Belgium**  
by **Passionate Engineers**

### C+R Automations- GmbH

Nürnberger Straße 45  
90513 Zirndorf

Tel. +49 (0)911 656587-0  
Fax +49 (0)911 656587-99

E-Mail: [info@crautomation.de](mailto:info@crautomation.de)  
[www.crautomation.de](http://www.crautomation.de)

Änderungen vorbehalten



**Accurate positioning.**

VRIJDAGMARKT 10/201  
9000 GENT - BELGIUM