

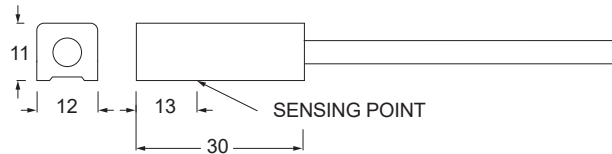
KT-31 SERIES



High Temp. Resistant
Max 140°C

Dimensions

M8#A %& Connector option is available



Unit : mm

Specifications

MODEL	KT-31R
Connect Diagram	
Characteristics	
Wiring Method	2-Wire Type
Switching Logic	SPST, Normally Open
Sensor Type	Reed Switch
Operating Voltage	5 ~ 240 V DC / AC
Switching Current	500 mA max.
Contact Rating ※1	10 W max.
Current Consumption	-
Voltage Drop	0.5 V max.
Leakage Current	-
Indicator	-
Cable	Ø3 Teflon - 24 AWG (0.22 mm ²) - 2 cores
Operating Frequency	200 Hz
Magnet Requirement ※2	40 Gauss
Temperature Range	-10 ~ 140°C
Shock ※3	30 G
Vibration ※4	9 G
Enclosure Classification	IEC 60529 IP67
Protection Circuit ※5	1

NOTE

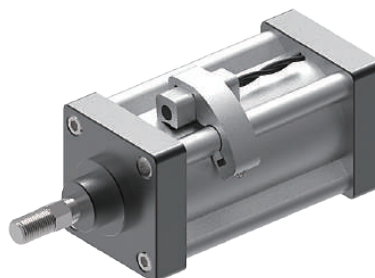
※1 : WARNING : Never exceed rating (Watt = Voltage x Amperage).
Permanent damage to sensor will occur.

※2 : Measuring standard target : Ø15.5 × Ø8 × 5t (Anisotropy rubber magnet)

※3 : Sin wave / X , Y , Z 3 directions / 3 times each direction / 11 ms each time.

※4 : Double amplitude 1.5 mm / 10 Hz ~ 55 Hz ~ 10 Hz (Sweep 1 min) / X , Y , Z 3 directions / 1 hour each time.

※5 : 1 = None / 2 = Short-circuit / 3 = Power Source Reverse polarity / 4 = Surge Suppression



C+R Automations- GmbH

Nürnberg Straße 45
90513 Zirndorf

Tel. +49 (0)911 656587-0
Fax +49 (0)911 656587-99

E-Mail: info@crautomation.de
www.crautomation.de

Änderungen vorbehalten